

## PRODUCT LINE CARD

### ABB

- Medium Voltage Switchgear
- Busway
- Motor Control Centers
- Power Monitoring & Controls
- Transformers – Cast Oil, Oil Filled & Dry Type
- Circuit Breakers
- Miniature Circuit Breakers
- Power Supplies
- Electronic Controls & Relays
- Pilot Devices
- Contactors & Overloads
- Safety Products

### Aeros USA

- Flexible Conduit

### Apogee

- Platform Lighting Systems

### ASCO

- Paralleling Switchgear
- Automatic Transfer Switches
- Automatic Transfer Panels
- Surge Protection Devices
- Contactors

### Atlas IED

- Outdoor & Indoor Speakers/Horns
- Amplifiers
- Power & Onboard DSP
- Intercom Systems
- Public Address (PA) Systems

### Boyce Technologies

- Access Nodes
- Edge Processor unit
- Bi-Directional Antenna

### Code Blue

- Emergency Phones & Signaling Devices
- PA Systems
- Help Point Enclosures
- Emergency/High-Intensity Lighting
- Mass Notification Software System

### Fujitsu

- Access Nodes
- COE Equipment

### Genetec

- Security Center Synergis IP Access Control System
- Genetec Security Center
- Omnicast Enterprise VMS

### Haewa

- Air Conditioning
- Climate Control
- Industrial Enclosures
- Bus Bar

### Hammond

- Enclosures & Racks
- Classis Transformers

### Harting Electric

- Industrial Connectors – HAN

### IBOCO

- Wiring Duct

### Lutze

- Cable Tracks
- High-Temp Power Cables
- Specialty Cables
- Torsion/Servo Motor Cables

### NVent

- 3<sup>rd</sup> Rail Heaters

### Paige Electric

- Ethernet Cable (CAT6)

### Phoenix Contact

- Ethernet Hubs/Switches
- I/O Modules
- Industrial PCs
- Interbus, Profibus
- Wireless I/O Devices
- Plug Connectors
- Power Supplies
- Relays
- Soft PLC
- Terminal Blocks

### Powell Industries

- Medium Voltage Switchgear
- Traction Power Substations
- DC Switchgear

### RFID

- Radio Frequency ID Tags
- Tag Readers

### Rittal

- Cabinets & Accessories
- Climate Air Conditioning
- Climate Control

### SAB

- Cable Tracks
- High Temp Power Cables
- Specialty Cables

### Saginaw

- Industrial Enclosures – Steel, Fiberglass, Custom

### Schweizer Electronic

- Minimet Lynx Lookout Operated Warning System
- Minimet Lynx Automatic Train Warning System
- Minimet Lynx Rental Equipment

### Selco

- Custom Fabrications
- Electrified Transit/3<sup>rd</sup> Rail
- DC Power Distribution
- Electrical Enclosures
- Cable Trays & Fittings

### Siemens

- Circuit Breakers, Drives & Busway
- Motor Control Centers
- Power Monitoring & Controls
- LV/MV Switchgear
- Motors & Motor Starters
- Operator Interfaces
- PLCs, Panel Boards
- Pilot Lights & Push Buttons
- Relays & Switches
- Variable Frequency Drives
- Power Supplies
- Software
- RUGGEDCOM

### SWIVELINK

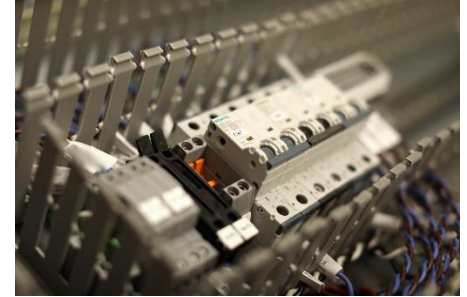
- Mounting Equipment
- Robot Accessories
- Safety Devices, Conveyors & Guarding

### WALTHER

- Pin & Sleeve
- Power Connectors
- Power Distribution Units

## CERTIFICATIONS





Here at PRI, we have the latest innovation of products and technologies from Siemens, Phoenix Contact, Harting, and Haewa, as well as many other manufacturers. Experience a trip into the world of automation and power, where you will find the potential to reduce lifecycle costs while also increasing both productivity and reliability.

PRI is a leading automation distributor in providing the latest cutting-edge products and technologies to satisfy all our customers' needs.

PRI maintains a cadre of in-house engineering experience in specialized areas such as SCADA Systems, PLC Programming, and Network planning. We also have experience in managing complete projects from initial design to product fulfillment:

- Project Management
- Engineering – Automations & Control, Communications
- Software Development & Programming
- Fabrication
- QC Testing
- Training
- Field Service & Asset Management

PRI also provides a large line of products for distribution:

- Industrial Automation
- Control Products
- Power Distribution
- Drives & Motors

**Power Resources International, Inc.**  
31 Nancy Street West Babylon, NY 11704  
Phone: (631) 643-3170  
Fax: (631) 883-9140  
[www.priinc.com](http://www.priinc.com)

Follow us on social:

